

LTR-S Specification Series

24VDC RGBW Dry Location LED Tape Specification Sheet



| | |
|--------------|------|
| Project Name | Type |
|--------------|------|

| | |
|-----------|------|
| Catalog # | Date |
|-----------|------|

PRODUCT OVERVIEW

GM's RGBW is a quantum leap beyond RGB. With the addition of a 3000K White element, a virtually unlimited palette of color and brightness is enabled. For general activity use, utilize the white light component. Designed for high quality light illumination. Available in 16'-4" (5M) or 32'-8" (10M) reels.

FEATURES

- RGB with 3000K White 4-in-One LED chip
- Dry location
- Cuttable every 4"
- Custom lengths available - consult factory
- 60 LED's / meter
- 120° viewing angle
- 3M adhesive back
- Maximum run on a given lead is 16'-4" (6W) and 32'-8" (3W)

SPECIFICATIONS

ELECTRICAL

- 24V
- 3W or 6W Per Foot

OPERATING TEMP

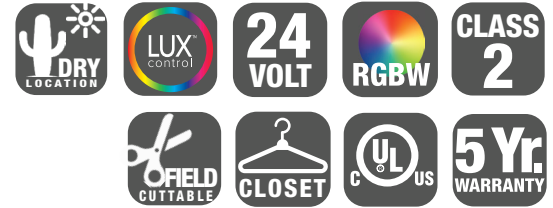
- -4°F to 122°F

CERTIFICATION

- UL
- Class 2
- Closet Rated

WARRANTY

- 5-year warranty when paired with GM power supply.
Note: 24V non-dimming power supply required.



ORDERING INFORMATION

Example: LTR-S-24V-3.0W-RGBW-16

| Model | - | Series | - | Voltage | - | Wattage | - | Type | - | Reel Length |
|-------|---|--------|---|---------|---|---------|---|------|---|-------------|
| LTR | | S | | 24V | | 3.0W | | RGBW | | 16 |
| LTR | | S | | 24V | | 3.0W | | RGBW | | 32 |
| LTR | | S | | 24V | | 6.0W | | RGBW | | 16 |

ACCESSORIES

| Model | Description |
|----------------|---|
| RGBW-RTR-EZ-1 | RGB EZ tape to tape connector |
| RGBW-RTR-EZ-3 | 3" RGB EZ tape to tape connector |
| RGBW-RTR-EZ-12 | 12" RGB EZ tape to tape connector |
| RGBW-RTR-EZ-24 | 24" RGB EZ tape to tape connector |
| RGBW-RTR-EZ-36 | 36" RGB EZ tape to tape connector |
| RGBW-RTR-EZ-60 | 60" RGB EZ tape to tape connector |
| RGBW-RPS-EZ-60 | 60" RGB EZ tape to controller connector |

Your LED Tape Specification Checklist:

1. Select Tape
2. Select Connectors
3. Select Channels
4. Select Controllers
5. Select Power Supplies

INSTALL SHEET



LTR-S Specification Series

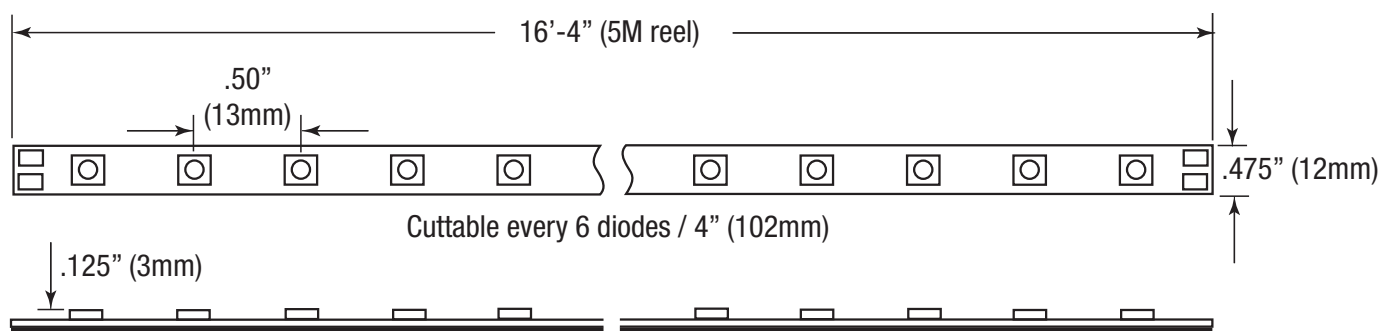
24VDC RGBW Dry Location LED Tape Specification Sheet



| Catalog No. | Length | Wattage / ft. | Lumens in 3000K mode only | Type | Max. Run |
|------------------------|--------------|---------------|---------------------------|------|----------|
| LTR-S-24V-3.0W-RGBW-16 | 16'-4" / 5M | 3W | 210 | RGBW | 32'-8" |
| LTR-S-24V-3.0W-RGBW-32 | 32'-8" / 10M | 3W | 210 | RGBW | 32'-8" |
| LTR-S-24V-6.0W-RGBW-16 | 16'-4" / 5M | 6W | 430 | RGBW | 16'-4" |

Kelvin temperature (color) ±100K.
16'-4" and 32'-8" reels includes 48" lead affixed to tape.

DIMENSIONS



LTR-S Specification Series

24VDC RGBW Dry Location LED Tape Specification Sheet



COMPATIBLE CONTROLLERS

| Model | Description |
|---------------|--|
| SHWC-RGBW | LUXcontrol Smart 2.4 GHz WiFi Controller, Standard 12V/24V Low Voltage, RGBW, 4-Channel / 5-Wire |
| SHWC-RGBW-RPT | LUXcontrol Universal Smart Power Repeater |
| DMX-LT-995 | 5-Channel DMX Decoder |
| RGBW-DMX-WC | DMX Wall Controller |
| HC-RF-UNV-5CH | Universal 1-5 Channel RF Remote Control |
| CM-RF-UNV-5CH | Universal 1-5 Channel Control Module |
| RPT-UNV-5CH | Universal 1-5 Channel Repeater Amplifier |

RECOMMENDED DRIVERS

| Catalog No. | Description | Watts | Weight | Dimensions |
|----------------|--|-------|----------|--------------------------|
| LD-E-UNV30 | 12VDC / 24VDC - 30W - 120V or 277V - 50/60Hz 12V/2.5A - 24V/1.25A - Class 2 Auto reset. | 30W | 1.0 lbs. | 6.10"L x 3.35"W x 1.33"H |
| LD-E-UNV60 | 12VDC / 24VDC - 60W - 120V or 277V - 50/60Hz 12V/5A - 24V/2.5A - Class 2 Auto reset. | 60W | 2.5 lbs. | 8.25"L x 4.10"W x 1.56"H |
| LD-E-UNV96-24 | 24VDC - 96W - 120V or 277V - 50/60Hz - 4 amps Class 2 - Auto reset. | 96W | 2.5 lbs. | 8.25"L x 4.10"W x 1.56"H |
| LD-E-UNV200-24 | 24VDC - 192W - 120V or 277V - 50/60Hz - 4 amps per channel (2) Class 2 - Auto reset. 2 X 96W channel. | 192W | 4.7 lbs. | 9.50"L x 6.35"W x 1.56"H |
| LD-E-UNV300-24 | 24VDC - 288W - 120V or 277V - 50/60Hz - 4 amps per channel (3) Class 2 - Auto reset. 3 X 96W channel. | 288W | 4.7 lbs. | 9.50"L x 6.35"W x 1.56"H |

Please see our website for updated power supply specifications and information.

CORD AND PLUG DRIVERS

| Catalog No. | Description | Watts | Weight | Dimensions |
|-------------|--|-------|----------|--------------------------|
| LTP24-48 | 24VDC - 48W - 2 amps - 120V - 120V Cord (72") and plug. Short circuit, overload protection - LED indicator for power on. UL listed | 48W | 1.8 lbs. | 4.68"L x 2.05"W x 1.25"H |
| LTP24-90 | 24VDC - 90W - 3.75 amps - 120V - 120V Cord (72") and plug. Short circuit, overload protection - LED indicator for power on. UL listed | 90W | 1.8 lbs. | 4.68"L x 2.05"W x 1.25"H |

Please see our website for updated power supply specifications and information.

LTR-S Specification Series

24VDC RGBW Dry Location LED Tape Specification Sheet



COMPATIBLE CHANNELS - (fit RGBW-RTR-EZ connectors on pg. 1)

EXTRA DEEP

| Catalog No. | Description | Length | Dimensions |
|----------------|---|--------|------------|
| LED-CHL-XD | Extra deep format extruded channel. Includes snap-on frosted lens with mounting clips and screws. | 4' | |
| LED-CHL-XD-6 | Extra deep format extruded channel. Includes snap-on frosted lens with mounting clips and screws. | 6' | |
| LED-CHL-XD-AMC | (2) Adjustable mounting brackets for LED-CHL-XD | N/A | |
| LED-CHL-XD-EC | (2) End caps for LED-CHL-XD. One solid, one with hole. | N/A | |
| LED-CHL-XD-MC | (2) Mounting clips and screws for LED-CHL-XD | N/A | |

EXTRA DEEP FLANGED

| | | | |
|-----------------|---|-----|--|
| LED-CHL-XD-F | Extra deep format extruded channel with flange. Includes snap-on frosted lens with mounting clips and screws. | 4' | |
| LED-CHL-XD-F-6 | Extra deep format extruded channel with flange. Includes snap-on frosted lens with mounting clips and screws. | 6' | |
| LED-CHL-XD-F-DC | (2) Drywall mounting brackets for LED-CHL-XD-F | N/A | |
| LED-CHL-XD-F-EC | (2) End caps for LED-CHL-XD-F. One solid, one with hole. | N/A | |

45° ANGLE MOUNT

| Catalog No. | Description | Length | Dimensions |
|---------------|--|--------|------------|
| LED-CHL-45 | Extruded angled (45°) channel. Includes snap-on frosted lens with mounting clips and screws. | 4' | |
| LED-CHL-45-EC | (2) End caps for LED-CHL-45 - one solid, one with hole | N/A | |
| LED-CHL-45-MC | (2) Mounting clips and screws for LED-CHL-45 | N/A | |

45° LARGE ANGLE MOUNT

| | | | |
|--------------------|--|-----|--|
| LED-CHL-45-1200 | Extruded angled (45°) channel. Includes snap-on frosted lens with mounting clips and screws. | 4' | |
| LED-CHL-45-1200-EC | (2) End caps for LED-CHL-45 - one solid, one with hole | N/A | |
| LED-CHL-45-1200-MC | (2) Additional mounting clips for LED-CHL-45-1200 | N/A | |

WIDE

| | | | |
|---------------|---|-----|--|
| LED-CHL-W | Wide format extruded channel. Includes snap-on frosted lens with mounting clips and screws. | 4' | |
| LED-CHL-W-6 | Wide format extruded channel. Includes snap-on frosted lens with mounting clips and screws. | 6' | |
| LED-CHL-W-AMC | (2) Adjustable mounting brackets for LED-CHL-W | N/A | |
| LED-CHL-W-EC | (2) End caps for LED-CHL-W - one solid, one with hole. | N/A | |
| LED-CHL-W-MC | (2) Additional mounting clips for LED-CHL-W | N/A | |

MUD IN - STANDARD

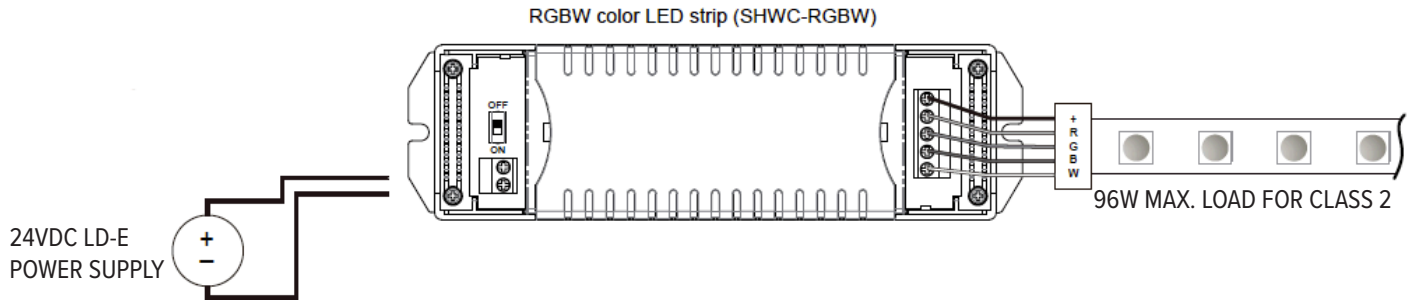
| Catalog No. | Description | Length | Dimensions |
|------------------|---|--------|------------|
| LED-CHL-MI-ST6 | Standard extruded aluminum mud-in channel. Includes snap-on frosted lens. | 6' | |
| LED-CHL-MI-ST-EC | (2) End caps for LED-CHL-MI-ST6 one solid, one with hole. | N/A | |

LTR-S Specification Series

24VDC RGBW Dry Location LED Tape Specification Sheet

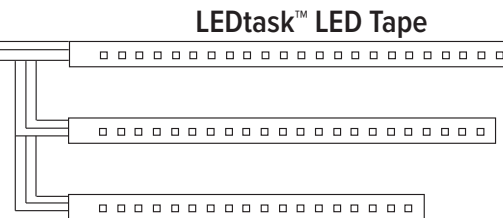
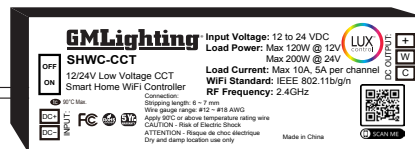
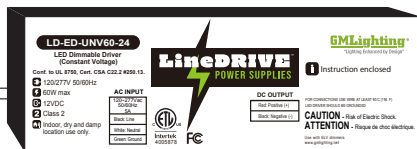
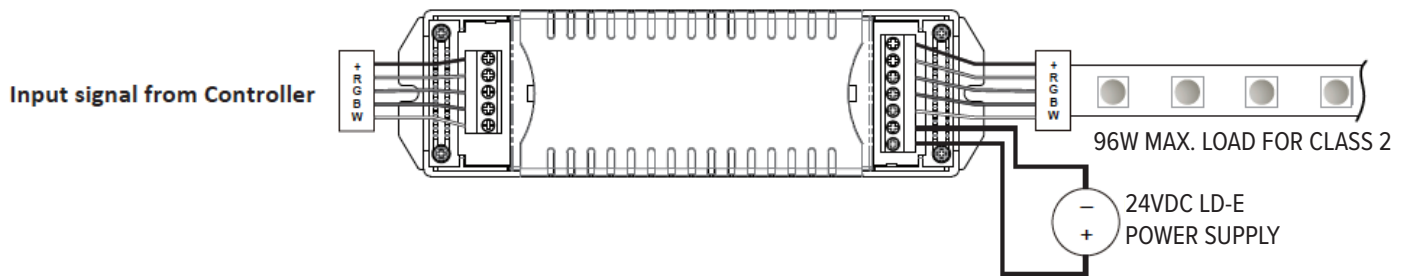


SHWC-RGBW LUXCONTROL WIFI CONTROLLER



SHWC-RGBW and Repeater Wiring

RGBW connection (4 channels)



Expandable with universal power repeater (SHWC-RGBW-RPT) for larger projects



Remote WiFi Control



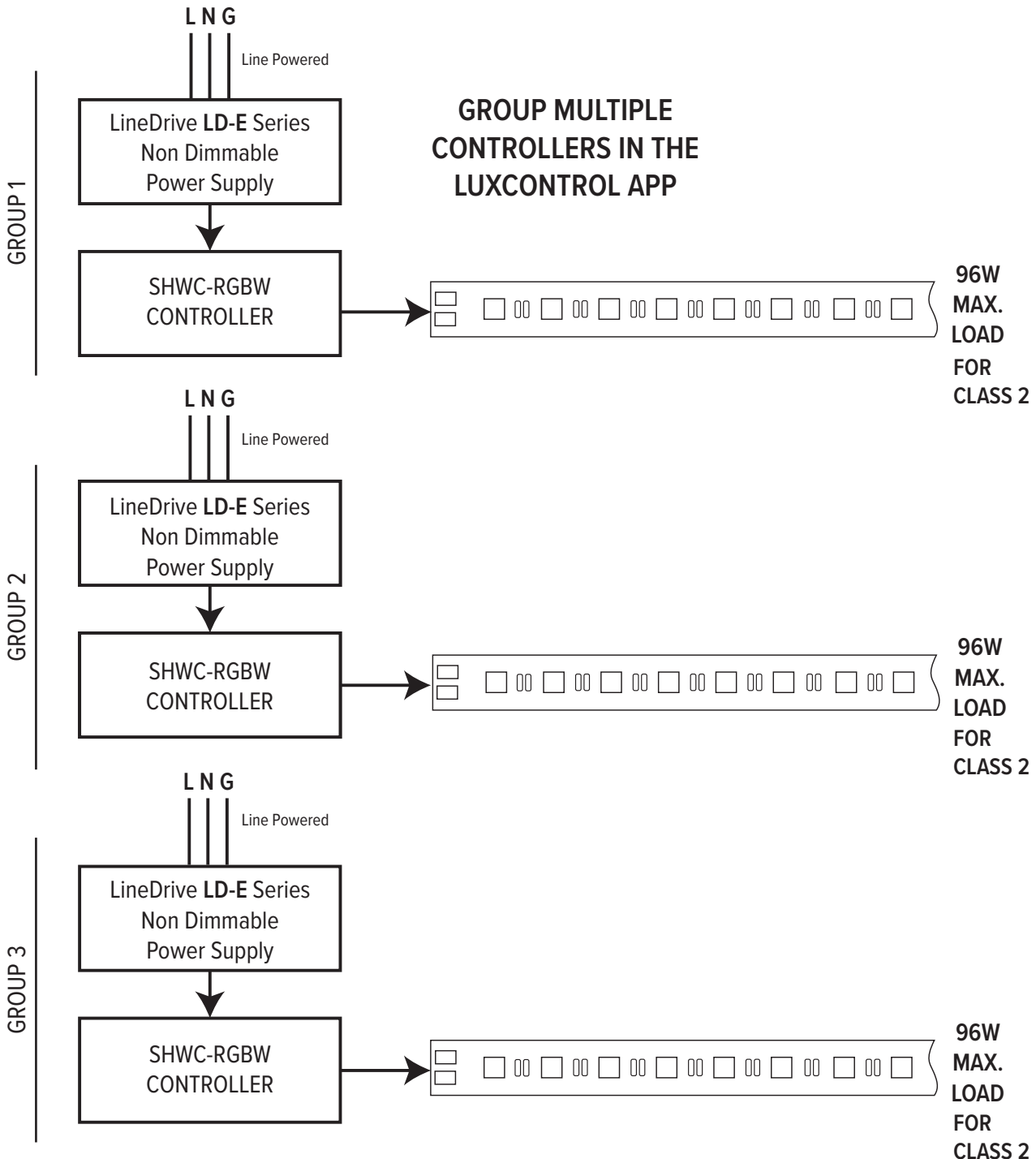
Note: For use with LD-E (non-dimmable) or LD-ED (dimmable) power supply only. Not compatible with LD-MD (magnetic) power supply.

LTR-S Specification Series

24VDC RGBW Dry Location LED Tape Specification Sheet



SHWC-RGBW LUXCONTROL WIFI CONTROLLER WIRING DIAGRAM

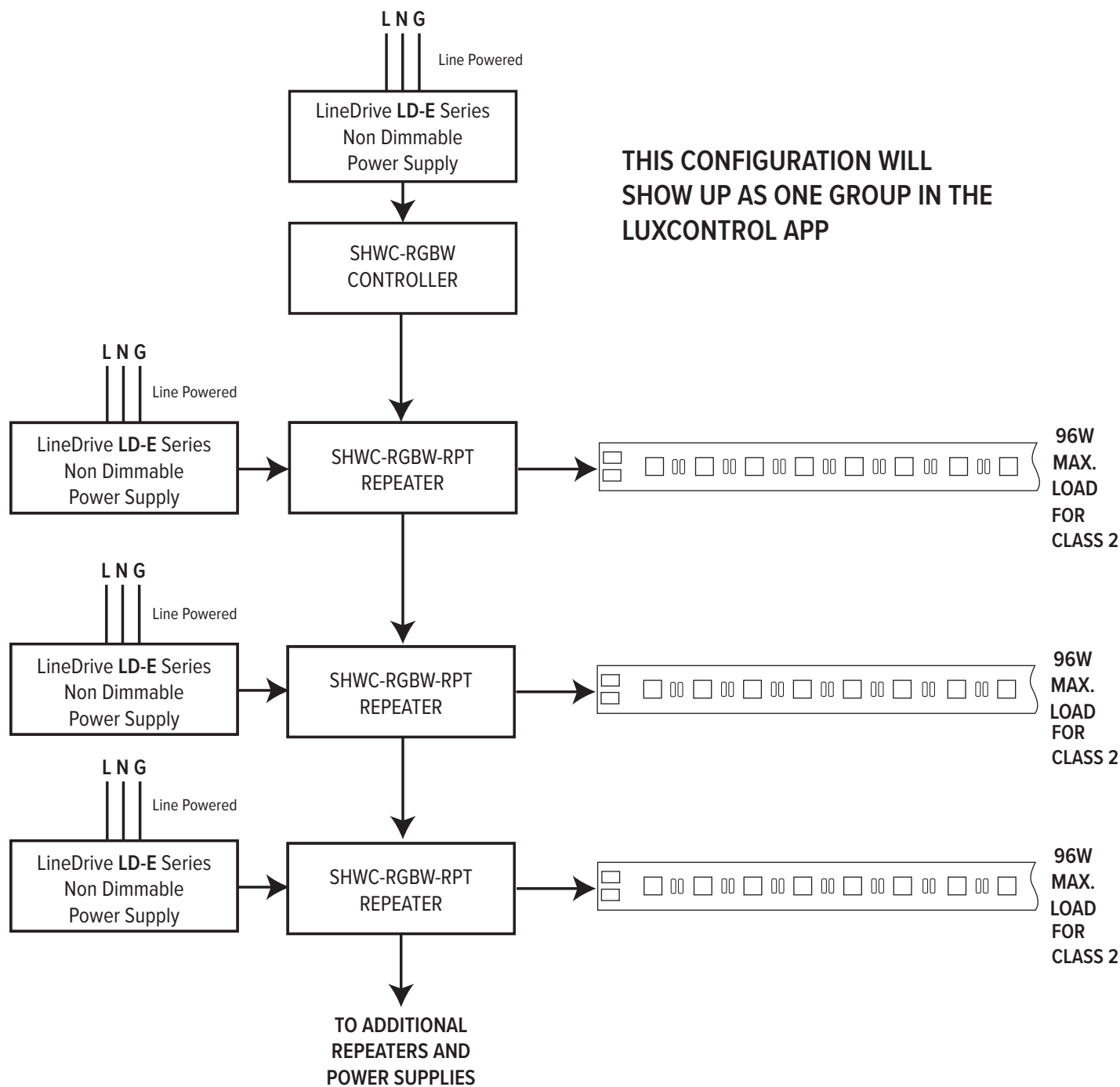


LTR-S Specification Series

24VDC RGBW Dry Location LED Tape Specification Sheet



SHWC-RGBW LUXCONTROL WIFI CONTROLLER WITH POWER REPEATER WIRING DIAGRAM

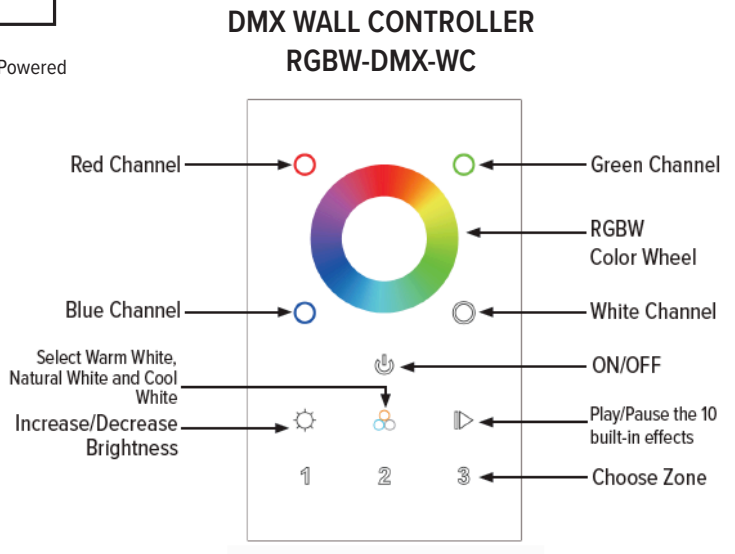
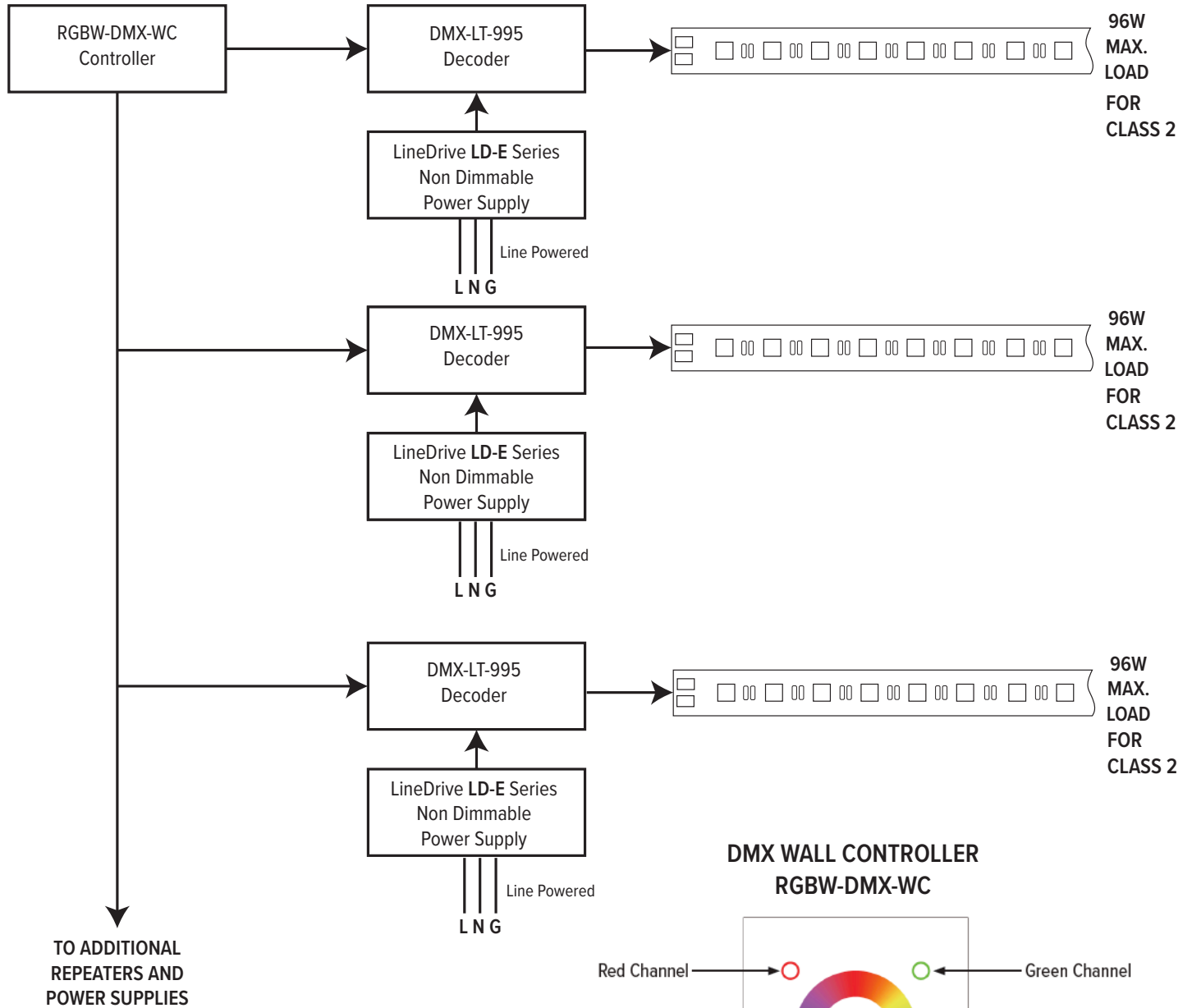


LTR-S Specification Series

24VDC RGBW Dry Location LED Tape Specification Sheet



RGBW-DMX-WC DMX WALL CONTROLLER WIRING DIAGRAM



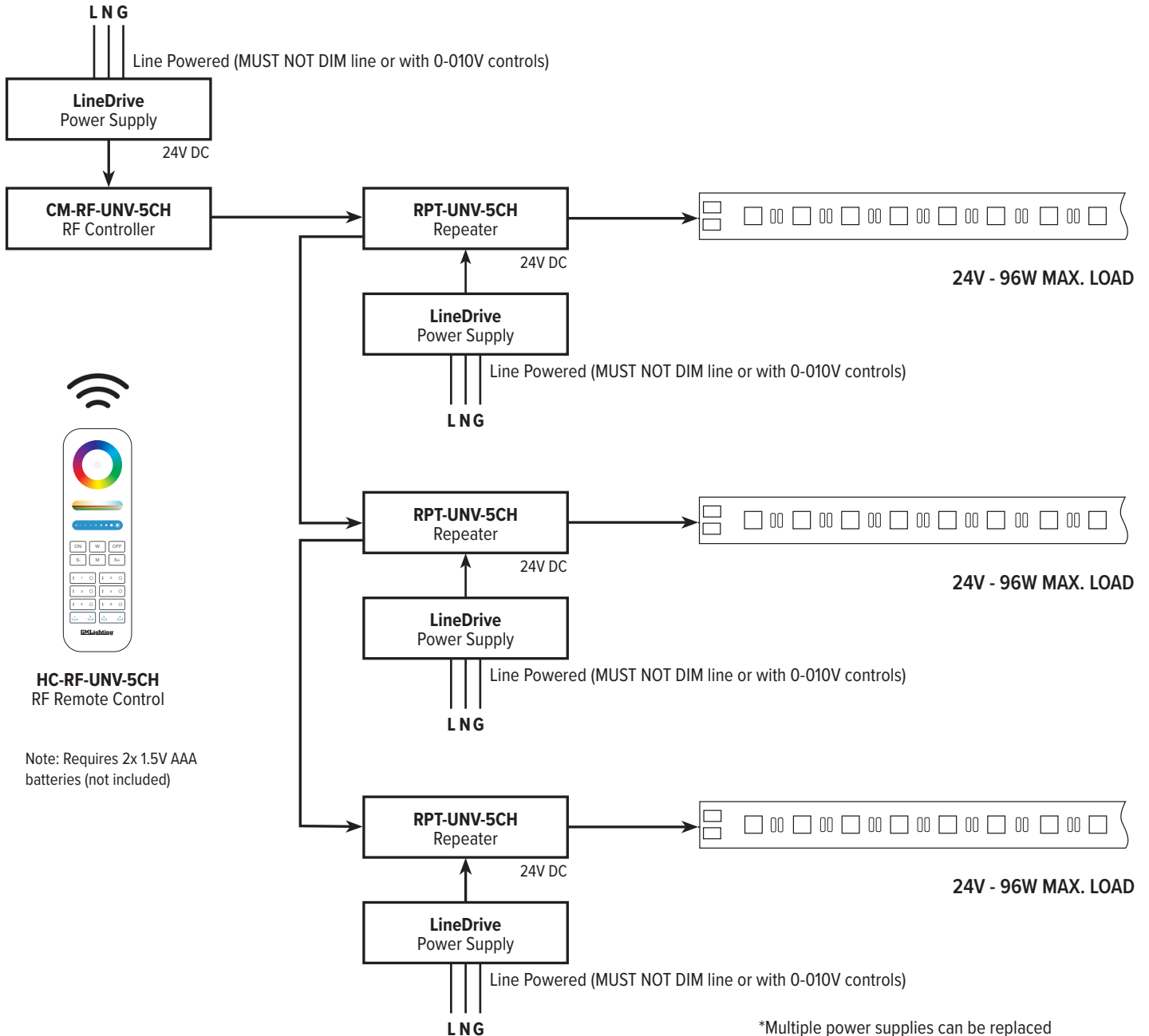
LTR-S Specification Series

24VDC RGBW Dry Location LED Tape Specification Sheet



RF CONTROLLER

Incoming power for (L N G) options can be 120V or 277V.
 Check power supply for proper input voltage and output power required.
 Power Supply output voltage must match LED operating voltage. (24VDC)
 Power supply used **MUST NOT BE DIMMED** at the input to properly power the controls.
 See Controller instructions for pairing and wiring details.



HC-RF-UNV-5CH
RF Remote Control

Note: Requires 2x 1.5V AAA batteries (not included)

*Multiple power supplies can be replaced with a single multi-output power supply.

Example: (3) **LD-E-UNV96-24** can be replaced by (1) **LD-E-UNV300-24**

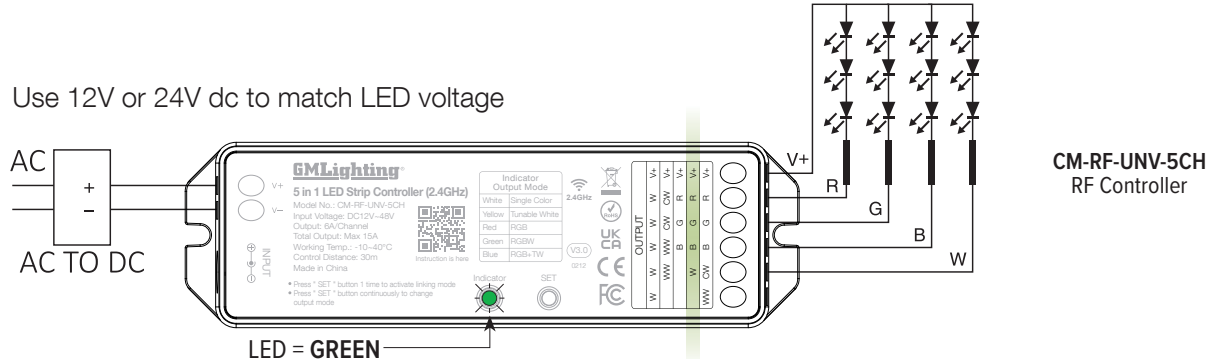
LTR-S Specification Series

24VDC RGBW Dry Location LED Tape Specification Sheet

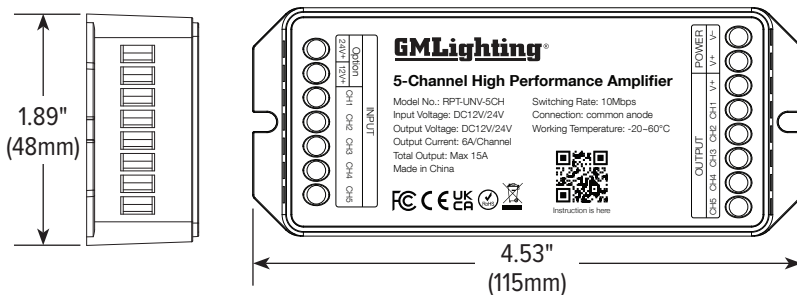
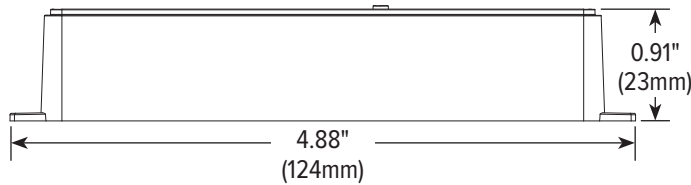
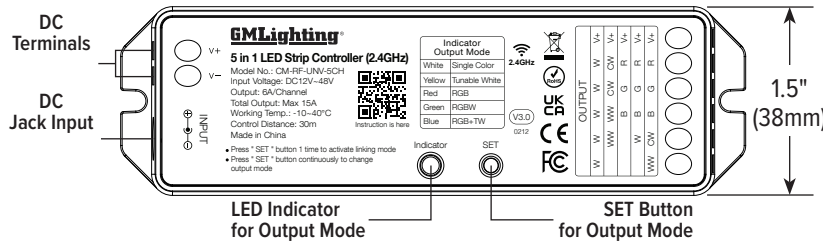


RF REMOTE CONTROLLER AND REPEATER

Use 12V or 24V dc to match LED voltage



DIMENSIONS



LTR-S Specification Series

24VDC RGBW Dry Location LED Tape Specification Sheet



RF HAND HELD REMOTE FEATURES AND DIMENSIONS

RF Remote Control
HC-RF-UNV-5CH
with Built-In Effects

